

THE SUBLIME AND PICTURESQUE

Landscape Artists from Wilson to Girtin

From Topography to Landscape Painting

George Lambert, *A View of Box Hill* (1733)



The Difference Canaletto made

The Thames from Somerset House Terrace towards the City (1750)



Watercolours : « Nature as it is in this country »

Paul Sandby, *Windsor : A General View Westwards* (1776)



Richard Wilson (1713-1782) : Italian Landscapes

Rome and the Ponte Molle (1754)



Richard Wilson (1713-1782) : Welsh Landscape

Snowdon from Llyn Nantlle (1765)



Richard Wilson (1713-1782) : Welsh mountains

Llyn-i-Caw, Cader Idris (1775)



Animal Painter : George Stubbs

Mares and Foals in a Landscape (1768)



John Robert Cozens (1752-1797) : The Elegiac Sublime

Between Chamonix and Martigny (1776)



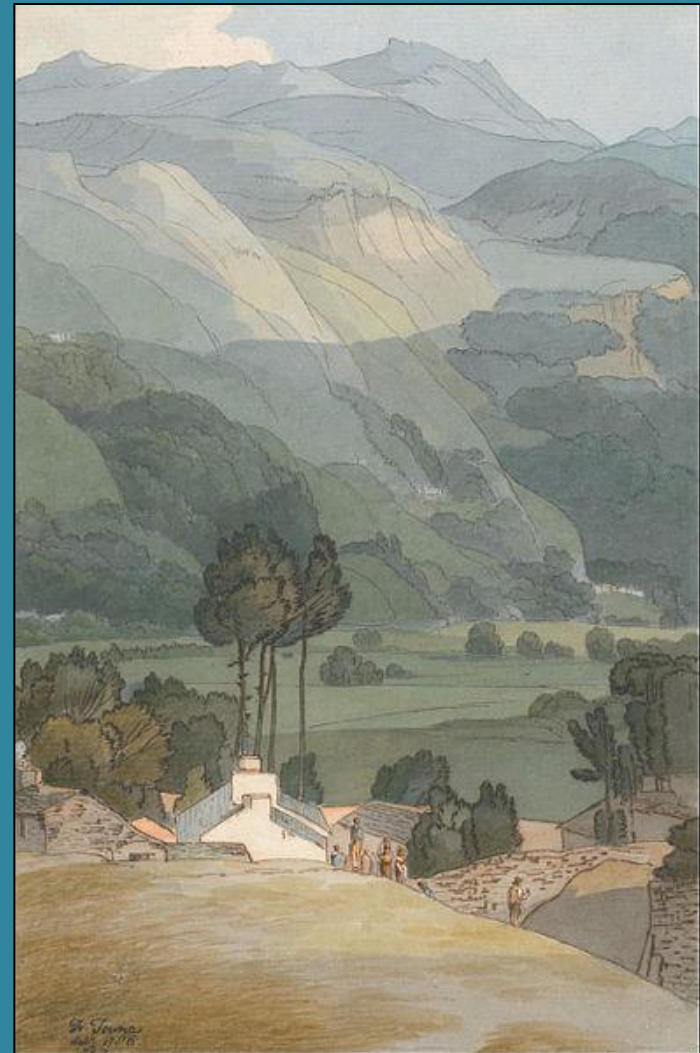
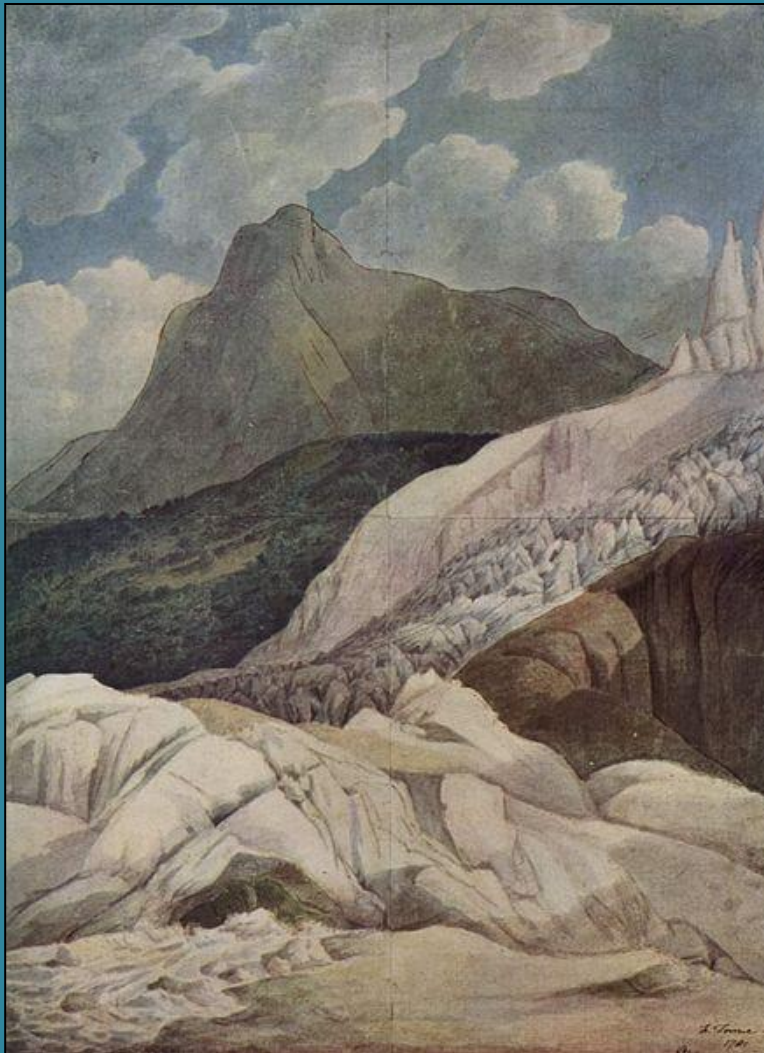
At the Mountains of Madness

Lake Albano and Castel Gandolfo at Sunset (1777)



Alps and Lakes : Francis Towne (1740-1816)

The Sources of the Arveiron (1781) / Ambleside (1786)



The Scenic Sublime : Loutherbourog

Avalanche dans les Alpes (1803)



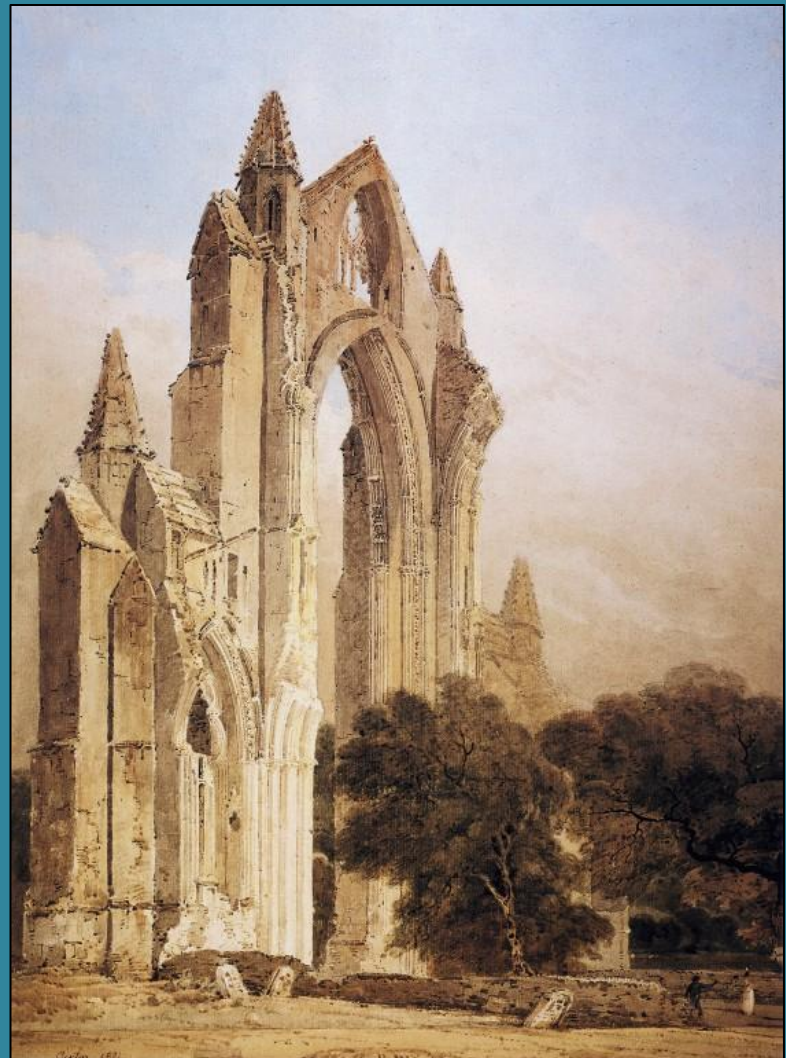
Vulgarised Picturesque : William Gilpin

The Lake at Keswick (1772)



Antiquarian Topography : Girtin and Turner

The Cloisters of Salisbury Cathedral (1802) / Guisborough Priory (1801)



Thomas Girtin (1775-1802)

The Emancipation of Watercolour Painting

The White House at Chelsea (1800)



Northern Landscapes and Colours

Stepping Stones on the Wharfe (1801)



Imperial Landscapes and Topography

William Hodges, *Tomb and Distant View of Rajmahal Hills* (1781)

